

APPROVED  
SITE PLAN

6000-2159

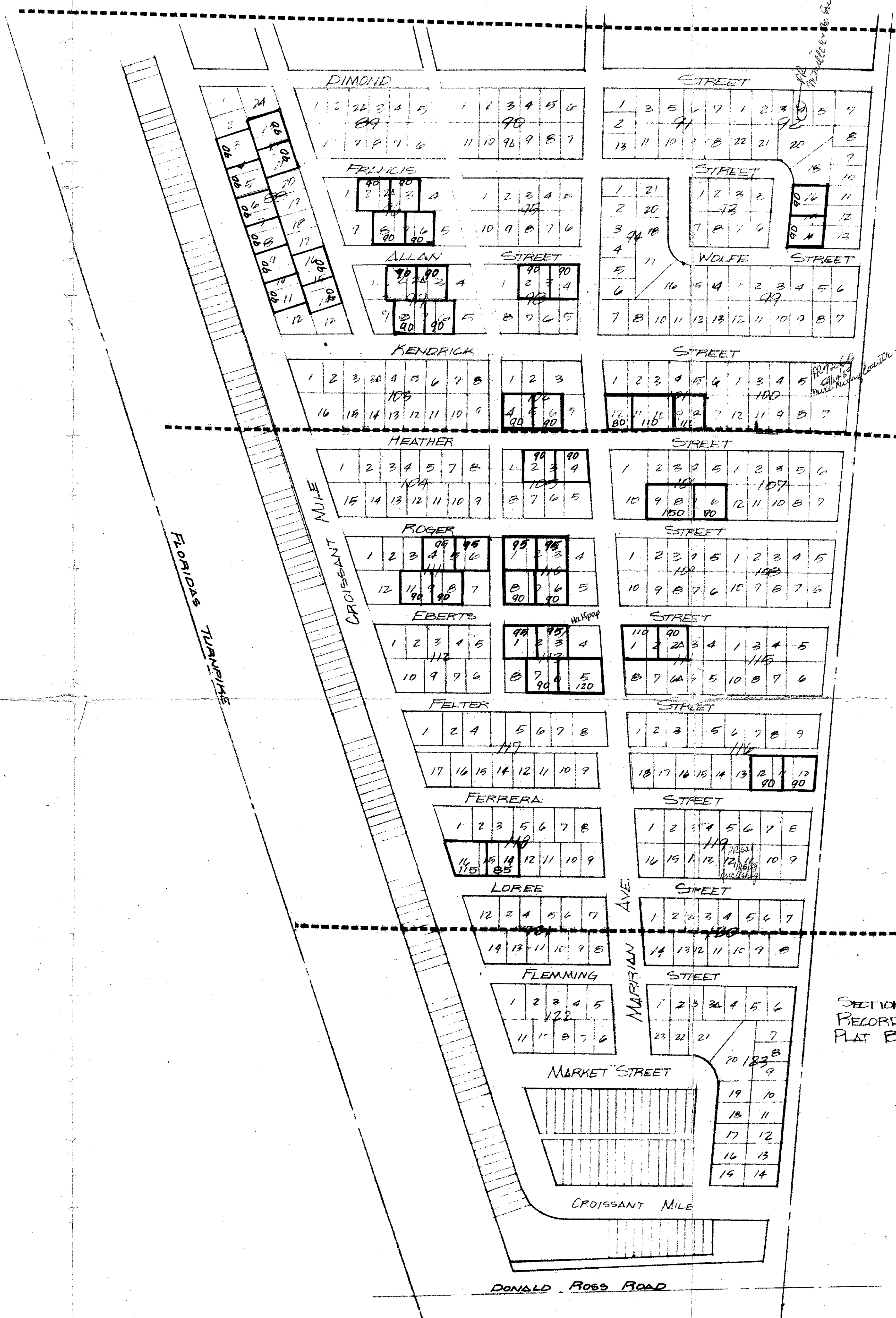
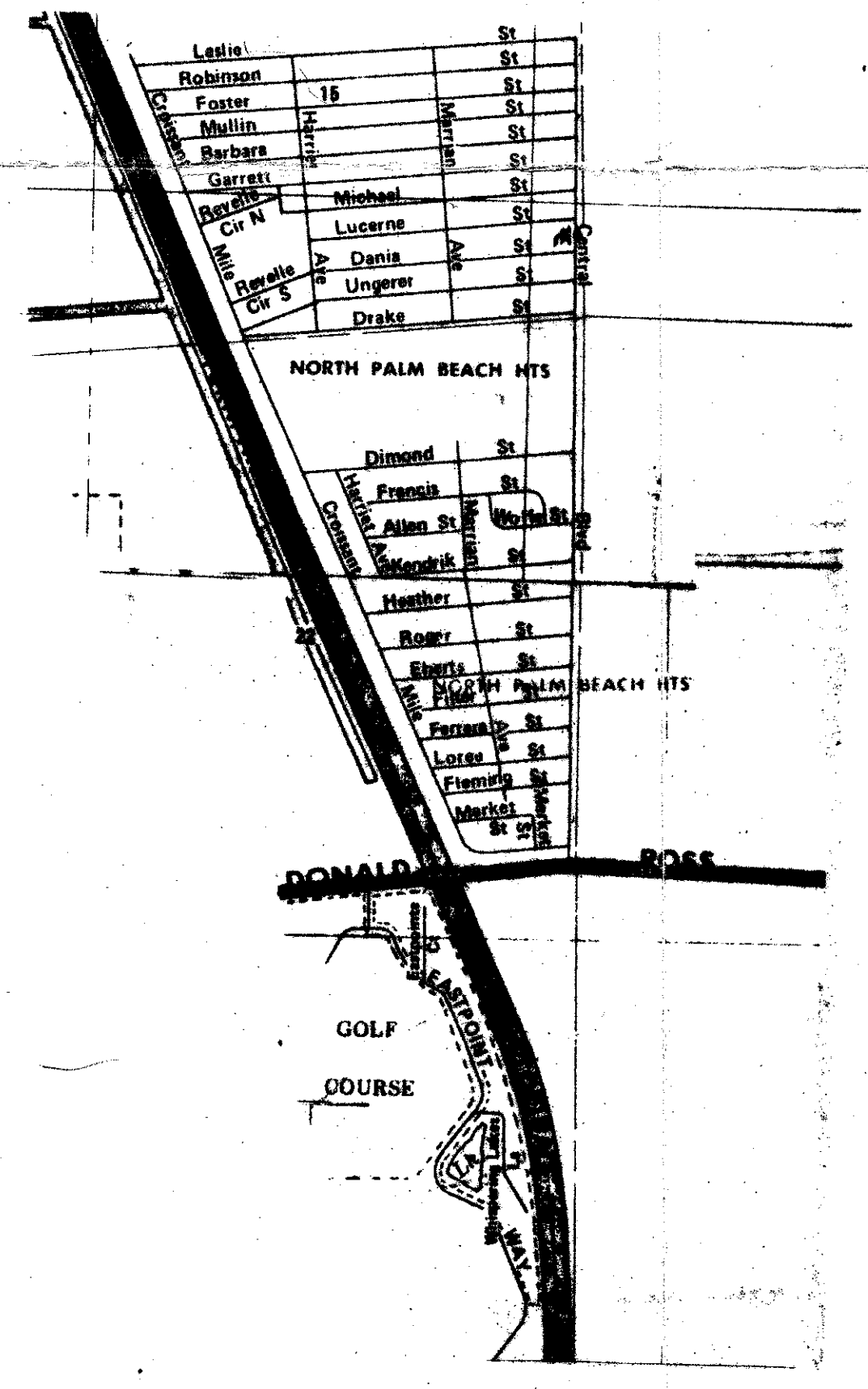
0479-303

NOTES TO BE RE-COMBINED  
NORTH PALM BEACH HEIGHTS SUBDIVISION, SECTION 2B

LOT	BLOCK
5, 4, 5, 6, 7, 8, 9, 10, 11, 14, 15, 16, 21, 22 & 23	88
14, 15 & 16	92
2, 2A, 3	96
2, 2A, 3, 6, 7 & 8	97
2, 3 & 4	98
8, 9, 10, 11 & 12	101
4, 5 & 6 (Recorded in Plat Book 27, Pg. 216 & 217)	102

NORTH PALM BEACH HEIGHTS SUBDIVISION, SECTION 2A

2, 3 & 4	105
6, 7, 8 & 9	106
1, 2, 3, 4, 6, 7 & 8	110
4, 5, 6, 8, 9 & 10	111
1, 2, 3, 5, 6 & 7	113
1, 2, 2A	114
10, 11 & 12	116
14, 15 & 16 (Recorded in Plat Book 27, Pg. 48 & 49)	118



SECTION 2B  
PB 27 Pgs. 216 & 217

SECTION 2A  
PB 27 Pgs. 48 & 49

SECTION 1  
RECORDED  
PLAT BOOK 26 PAGE 31

ur0037.igr  
NPB HEIGHTS 2 OF 2

2-22-50	FPS	CHANGED LOT CONFIGURATION & DESCRIPTIONS	DATE 12-6-79	SHALLOVAY INC. CONSULTING ENGINEER	NORTH PALM BEACH HEIGHTS SUBDIVISION PLATED LOT PLAN
			DRAW FPS		
			CHECK		
			APPROVE		
			FIELD		
DATE	BY	REVISION	JOB:		
			SCALE 1"=200' DE 79-64-C1 SHEET 2 OF 3		